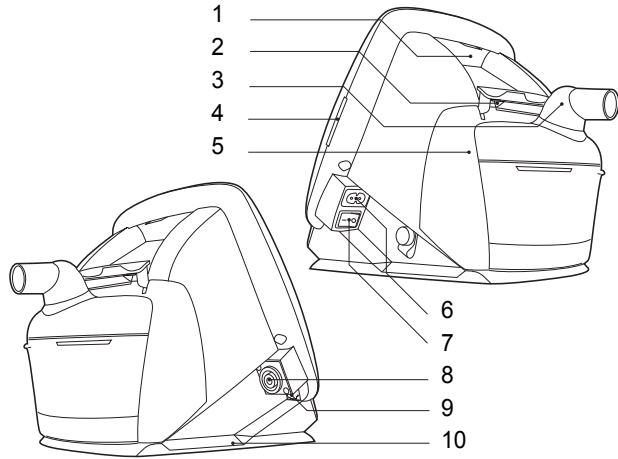


Product Description



NO.	ITEM	NO.	ITEM
1	Air inlet	6	AC inlet
2	Rear lid lock	7	On/Off
3	Air outlet	8	External DC inlet
4	Memory card slot	9	Data connection
5	HA 20 humidifier	10	Internal battery or base

Symbols Used in the Menu

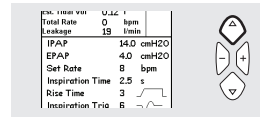
SYMBOL	DESCRIPTION	UNIT
	Battery level	
	Alarm time active	Hour : Minute
	HA 20 humidifier active	1 to 9, Off
	Ramp active	Minute
	Panel locked (home mode)	On, Off
	Panel locked (home mode) by the Breas Vivo PC software	On, Off

Checking the Vivo Before Use

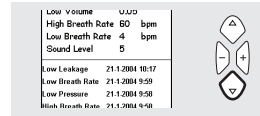
1. Connect a cleaned or new patient circuit to the Vivo.
 2. Connect the Vivo to the mains supply.
 3. Switch on the Vivo main power using the On/Off button on the side panel.
 4. Check patient settings.
 5. Press the Start/Stop button on the front panel.
 6. Put on the mask and adjust its fit.
 7. Ensure that the settings are adjusted as prescribed.
- The Vivo is ready for use.

Viewing the Settings and Alarm History

To show settings:
Enter the main screen and press up button for 5 seconds.



To show alarm history and alarm settings:
Enter main screen and press down button for 5 seconds.



Vivo 30/40

User Quick Reference Guide

Doc. 004448 En-Uk A-1



Breas Medical AB, Företagsvägen 1,
SE-435 33 Mölnlycke, Sweden,
Phone: +46 31 86 88 00, Fax: +46 31 86 88 10,
breas@breas.com
Find your local distributor at www.breas.com



ENGLISH

Quick Usage Guide

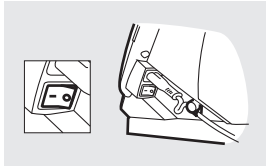
Thank you for choosing a Vivo product. The Vivo is a pressure-supported and pressure-controlled ventilator for homecare. This Quick Reference Guide allows you to easily start up your treatment.



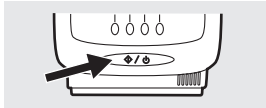
This is not a complete guide for the Vivo. See your manual for complete instructions.

Switching On and Off

Make sure the mains supply is connected and the On/Off button is switched on.

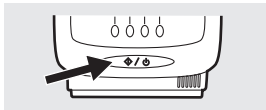


Turn on the Vivo by pressing the Start/Stop button for 2 seconds.



Turn off the Vivo:

1. Press and hold the Start/Stop button.
2. Release the Start/Stop button.
3. Press the Start/Stop button again.

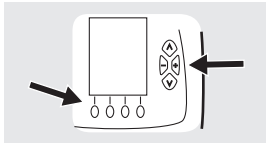


Release button to turn off

Press button to turn off

Using the Menu

Use the four navigation buttons and the up, down, "+" and "-" buttons in order to navigate the Vivo menu.

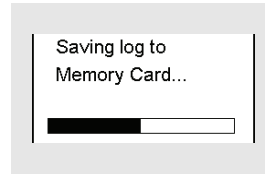
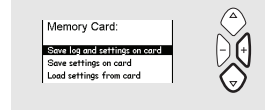
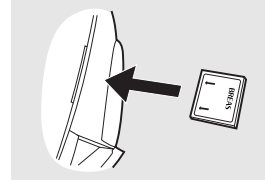


Using the Memory Card



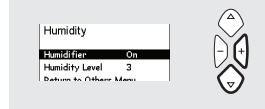
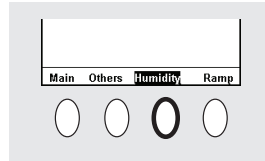
The Vivo can only copy and transfer data to the memory card in standby mode (not operating).

1. Insert the memory card in the memory card slot on the side of the Vivo. Make sure the memory card is properly inserted.
2. Navigate to the "Memory card" page under the "Others" section.
3. Select the desired operation and wait while the ventilator loads or saves to the memory card.



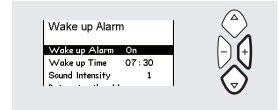
Humidifier

1. Navigate to the "Humidity" screen.
2. Use the navigation buttons to alter the humidity settings.

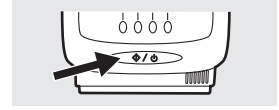


Wake Up Alarm

Use the navigation buttons to go to the "Wake Up Alarm" screen and to turn the wake up alarm on.

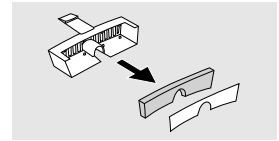


Press the Start/Stop button to turn off the alarm signal when the alarm is going off.



Cleaning and Replacing the Patient Air Filter

The patient air filter is located in the filter cassette at the rear of the ventilator.



There are two types of filters:

Washable Filter (grey colour)

Replace the washable filter at least once a year. Wash the filter at least once a week.

Disposable Filter (white colour)

Replace the filter at least every 4th week, or more often when used in high pollution or pollen-rich environments.