

Table of Contents

1	Introduction	3
1.1	What is the Vivo 30?	4
1.2	Intended Use	4
1.3	Contraindications	5
1.4	About this Manual	6
2	Safety Information	7
2.1	General User Precautions	7
2.2	Electrical Safety	9
2.3	Environmental Conditions	10
2.4	Usage of Patient Circuit	11
2.5	Usage of Filters	12
2.6	Humidification	13
2.7	Cleaning and Maintenance	14
2.8	Adverse Patient Symptoms	14
2.9	Usage of Oxygen	15
3	Product Description	16
3.1	Main Components	16
3.2	Accessories	18
3.3	The Vivo 30's Front Panel	19
3.4	The Vivo 30's Back and Side Panels	20
3.5	Equipment Designation and Safety Label	21
4	Functions and Parameters of the Vivo 30	23
4.1	Ventilation Mode	23
4.2	Settings	23
4.3	Standby and Operating Mode	23
4.4	Low Leakage Detection	24
4.5	Humidifier (optional)	24
5	Using the Vivo 30	25
5.1	Set up the Vivo 30 Before Use	25
5.2	Switching the Vivo 30 On and Off	26
5.3	Using the Menu	27
5.4	Monitoring Section	30
5.5	Using the HA 20 Humidifier	31
5.6	Using Batteries	32
5.7	Vivo 30 Operating Time	33
6	Preparing the Vivo 30 for Use	35
6.1	Installing the Vivo 30	35
6.2	Placing the Vivo 30	36
6.3	Connecting the Vivo 30 to the Mains Supply	36
6.4	Connecting the Patient Circuit	37
7	Alarms	38
7.1	Alarm Function	38
7.2	Physiological Alarm	40
7.3	Technical Alarm	45

8	Cleaning the Vivo 30 and Replacement of Accessories	48
8.1	Cleaning the Vivo 30	48
8.2	Cleaning and Replacing the Patient Air Filters.....	51
9	Maintenance	52
9.1	Regular Maintenance Control	52
9.2	Service and Repair.....	53
9.3	Storage.....	53
9.4	Disposal	53
10	Technical Specifications	54
10.1	Data	54
11	Accessories.....	59
11.1	Breas Accessories List.....	59
12	Patient Settings.....	61

1 Introduction



WARNING!

Vivo 30 must only be used:

- For the intended treatment in accordance with this operating manual and with the instructions given by the responsible clinical personnel.
- In accordance with the operating conditions specified in this operating manual.
- In original and unmodified shape and only with accessories specified or approved by Breas Medical AB.

Every other use may lead to risk of personal injury!



CAUTION!

Read this operating manual thoroughly so that you completely understand how the Vivo 30 is operated and maintained before taking it into use, to ensure correct usage, maximum performance and serviceability.



WARNING!

Do not use the Vivo 30 for any kind of life support treatment.



Breas Medical AB reserves the right to make changes to this product without any prior notification.

1.1 What is the Vivo 30?

The Vivo 30 is a pressure-supported and pressure-controlled ventilator.

It has three modes of operation: PCV (Pressure Control Ventilation), PSV (Pressure Support Ventilation) and CPAP (Continuous Positive Airway Pressure). The PCV and PSV modes have an adjustable inspiratory trigger sensitivity setting which allows the patient to initiate ventilator-assisted breaths.

- In the PCV mode (Pressure Control Ventilation), the ventilator provides assisted or controlled pressure-regulated breathing. In PCV mode, the clinician sets an inspiration time. The inspiratory pressure is set by the IPAP (Inspiratory Positive Airway Pressure) setting. The end-expiratory pressure is set by the EPAP (Expiratory Positive Airway Pressure) setting.
- In the PSV mode (Pressure Support Ventilation), the ventilator's expiratory trigger can also be adjusted allowing the ventilator to more easily match each patient's needs. The inspiratory pressure is set by the IPAP setting. The end-expiratory pressure is set by the EPAP setting.
- In the CPAP mode (Continuous Positive Airway Pressure), the ventilator provides a continuous positive airway pressure.

The Vivo 30 has a pressure sensor that continuously monitors output pressure to the patient and reference ambient pressure, so that the device automatically will compensate for altitude changes.

1.2 Intended Use

The Vivo 30 is not intended for life support or life-sustaining applications or for transport of critical care patients.

The Vivo 30 shall only be used by patients with spontaneous breathing.

The Vivo 30 is designed for patients who require long-term support by mechanical ventilation during night and part of the day, up to a maximum of 20 hours of use per day.

The Vivo 30 is intended for non-invasive use.

The Vivo 30 is intended for use in clinical settings (e.g., hospitals, sleep laboratories, sub-acute care institutions) and home environments. The Vivo 30 must always be prescribed by a licensed physician.

The Vivo 30 is intended for treatment of adult patients only.

The Vivo 30 is intended to be operated by qualified and trained personnel, or by personnel who have been taught using the clinician's manual.

1.3 Contraindications

The use of the Vivo 30 is contraindicated on patients with severe respiratory failure without a spontaneous respiratory drive.

Therapy with the Vivo 30 may be contraindicated when the following specific diseases or conditions are present:

- Pathologically low blood pressure
- Severe cardiac arrhythmias
- Unstable angina pectoris
- Decompensated cardiac failure or hypotension, particularly if associated with intravascular volume depletion
- Untreated Pneumothorax
- Pneumomediastinum
- Massive epistaxis or previous history of massive epistaxis (risk of recurrence)
- Pneumoencephalus, recent trauma or surgery that may have produced cranio-nasopharyngeal fistula

Caution should be used when prescribing positive airway pressure therapy for susceptible patients, such as patients with abnormalities of the cribriform plate, or prior history of head trauma.

The use of CPAP therapy may be temporarily contraindicated if the patient exhibits signs of a sinus or middle ear infection.

1.4 About this Manual



Always read this manual before setting up and using the Vivo 30 or performing maintenance on the machine, to ensure correct usage, maximum performance and serviceability.



Breas Medical AB reserves the right to make changes to the contents of this manual without any prior notification.

Audience

This manual is intended for patients and other lay users operating the Vivo 30.



Care providers, clinical personnel, physicians and others who require a working knowledge of the Vivo 30 will find additional information on settings and functions in the Clinician's Manual.

Icons

In this manual, icons are used to highlight specific information. The meaning of each icon is explained in the table below.

ICON	EXPLANATION
	Warning! Risk of death and serious personal injury.
	Caution! Risk of minor or moderate injury. Risk of equipment damage, loss of data, extra work, or unexpected results.
	Note Information that may be valuable but is not of critical importance, tips.
	Reference Reference to other manuals with additional information on a specific topic.

2 Safety Information

2.1 General User Precautions



- The Vivo 30 must be switched off and on at least once a day. This is necessary in order for the Vivo 30 to perform a self test.
- The Vivo 30 should not be used for total life support treatment.
- The Vivo 30 shall only be used by patients with spontaneous breathing.
- If you are admitted to a hospital or are prescribed any other form of medical treatment, always inform the medical staff that you are on mechanical ventilation treatment.
- Vivo 30 must only be used:
 - for the intended treatment in accordance with this operating manual and with the instructions given by the responsible clinical personnel;
 - in accordance with the operating conditions specified in this operating manual;
 - in original and unmodified shape and only with accessories specified or approved by Breas Medical AB.
- Do not use the Vivo 30 in the event of suspected damage to the device, unexplainable or sudden pressure, performance or sound changes during operation, or if the delivered air from the Vivo 30 is abnormally hot or emits an odour. Contact your responsible care provider for an inspection.
- Inadequate use of device or accessories may cause loss of treatment or decreased performance.
- The Vivo 30 therapy settings must always be based on medical supervision and must be changed by authorized clinical personnel only. Blood gas measurement should be performed when changing settings or changing to another device.
- Always perform the procedure “Set up the Vivo 30 Before Use” on page 25 before using the Vivo 30.
- Only use accessories recommended by Breas Medical AB.



- Clinical personnel must read the Clinician's manual thoroughly and understand the Vivo 30 operation before setting up and using the machine.
- The user must read the user manual thoroughly and understand the Vivo 30 operation before using the machine.
- All the physiological alarms of the Vivo 30 must be set at safe levels that will effectively warn the user of any risk. The alarm levels should be assessed considering the patient settings. Any change of settings or components may require the readjustment of the alarm levels.
- Handle the Vivo 30 with care.
- Do not use the Vivo 30 while in a carry bag. Attach the rear lid and place the swivel in a down position when placing the Vivo 30 in the bag.
- If using the Vivo 30 for a short intra hospital or vehicle transportation, the following cautions need to be observed:
 - Do not mount the Vivo 30 on a wheelchair or in a vehicle.
 - Make sure that the Vivo 30 stands securely in a upright position and cannot tilt or fall.
 - Do not use the Vivo 30 outdoors during rain or snowfall.
 - If the HA 20 is attached, make sure that it is not in use and that the water chamber is empty.

2.2 Electrical Safety



- Do not operate the Vivo 30 if it has a damaged power cord or casing.
- The Vivo 30 may not work properly if any part has been dropped, damaged or submerged in water.
- To avoid electrical shock, disconnect the electrical supply to the Vivo 30 before cleaning. Do not immerse the Vivo 30 into any fluids.
- The operator shall not touch accessible contacts of connectors and the patient simultaneously.
- When handling the HA 20 heating unit, always turn off the Vivo 30 and disconnect the Vivo 30 from the mains supply.
- Before detaching or attaching the HA 20 water chamber, always turn off the Vivo 30.



- If an external battery is used, always disconnect it when the Vivo 30 is switched off. Otherwise there is a risk that the battery will discharge.
- If the mains power source fails and an external battery activates, the HA 20 humidifier will be turned off automatically. It must be activated again manually, if humidification during battery use is necessary.
- The data connection port is only to be used by your care provider.

2.3 Environmental Conditions



- Do not use the Vivo 30 in any toxic environment.
- Do not use the Vivo 30 in environments where there are explosive gases or other flammable anesthetic agents present.
- If a room humidifier is used, place it at least 2 metres away from the Vivo 30.
- The performance of the Vivo 30 may deteriorate at ambient temperatures below 5°C (41°F) and above 38°C (100°F).



- Do not use the Vivo 30 while positioned in a warm place, such as direct sunlight.
- The device complies with the EMC requirements of standards. Measures should include but not be limited to:
 - normal precautions with regard to relative humidity and conductive characteristics of clothing in order to minimize the build-up of electrostatic charges.
 - avoiding the use of radio emitting devices closer than 1 m to the Vivo 30. Examples include: radio emitting devices such as cellular or cordless telephones, microwave ovens and high-frequency surgery apparatus.
- The Vivo 30, all accessories and replacement parts must be disposed of in accordance with the local environmental regulations regarding the disposal of used equipment and waste.
- The performance of the Vivo 30 and treatment of the patient may deteriorate if the operation conditions in “Technical Specifications” on page 54 are not fulfilled. Do not use the Vivo 30 immediately after storage or transport outside the recommended operating conditions.

2.4 Usage of Patient Circuit



- Only use the Vivo 30 with a mask, patient tube and leakage port recommended by Breas Medical AB and your health care professional.
- The Vivo 30 requires a leak port instead of an actively controlled exhalation valve to remove exhaled gases from the patient circuit. Therefore, specific masks and patient circuits using a leakage are required for normal operation. The pressurized air from the Vivo 30 causes a continuous flow of air to exhaust from the leak ports, flushing exhaled gas from the circuit. The Vivo 30 should be turned on and the leak ports should be checked before application.
- Do not breathe in the connected patient circuit unless the Vivo 30 is turned on and operating properly.
- Do not use patient hoses or tubes made of static or electrically conductive material.
- Patient connected parts and filter must be replaced regularly to ensure correct function of the Vivo 30. All replaced parts must be disposed of according to local environmental regulations regarding the disposal of used equipment and parts.
- Periodically check for moisture in the patient circuit. When present, remove the moisture. Before attempting to dry the circuit, disconnect it from the Vivo 30 to ensure no water will flow back into the Vivo 30.
- If the patient is using a full face mask (covering mouth and nose), the mask must be equipped with a safety entrainment valve.
- Make sure that the leakage ports are never blocked or obstructed. These ports are used to prevent re-breathing of exhaled air. Re-breathing of exhaled gases for longer than several minutes can, in some circumstances, lead to suffocation.
- At low CPAP pressures, the air flow through the leakage ports may be inadequate to clear all exhaled gases. Some re-breathing may occur.
- Do not leave long lengths of air tubing around the top of the bed. It could twist around the patient's head or neck while sleeping.
- Always follow the instructions of the mask manufacturer.

2.5 Usage of Filters



- Always use the Vivo 30 with patient air inlet filters installed. Only use filters that are specified in this manual.
- Replace or clean the filters regularly to ensure correct function of the Vivo 30, especially when changing patient. Failure to replace or clean a dirty filter may cause the Vivo 30 to operate at higher temperatures than intended.
- When operating the Vivo 30, make sure that the air inlet and filters are not obstructed or occluded.
- The use of a high resistance bacteria filter on the output of the device may interfere with the operation of the patient disconnect function. It may also interfere with the device trigger function.
- Do not connect any filter to the HA 20 humidifier.

2.6 Humidification



- The HA 20 humidifier is intended for non-invasive use only.
- Humidification must only be used if this has been prescribed by your physician. The Vivo 30 therapy settings must always be prescribed by a physician or other licensed health care professional, and be carried out by authorized clinical personnel.
- Before transportation of the Vivo 30 with the installed HA 20 humidifier, always disconnect the water chamber from the heating unit.
- Do not place the Vivo 30 with the HA 20 humidifier in a bag when the water chamber is attached.
- When the HA 20 humidifier is installed, the Vivo 30 must be located below the patient and on a flat surface. This is to prevent personal injury from accidental spillage or from excess water or condensation flowing down the patient tube and into the patient's mask. Extra cautions should be taken for patients who are unable to guard their airways or cannot pull off the mask.
- When using an external heated humidifier, it should be located below the Vivo 30 and the patient to prevent injury from accidental spillage.
- If the condensation in the patient circuit is excessive, the use of a heated humidifier may require the installation of a water trap in the circuit. The water trap prevents any condensed water in the patient circuit from running into the patient airways and causing personal injury.



The use of an HME (Heat and Moisture Exchanger, artificial nose) or an external humidifier may require readjustment of the Vivo 30's low-pressure alarm.

2.7 Cleaning and Maintenance



- The Vivo 30 should be cleaned and maintained in accordance with this operating manual.
- Do not attempt to autoclave or sterilise the Vivo 30.
- Vivo 30 should be subjected to maintenance, service and control and any applicable upgrades, in accordance with Breas service instructions.
- Vivo 30 shall only be repaired or modified in accordance with Breas service manuals, technical bulletins, and any special service instructions, by service technicians authorized by Breas Medical AB.
- Do not under any circumstances attempt to service or repair the Vivo 30 yourself. If you do so, the manufacturer will no longer be responsible for the performance and safety of the Vivo 30. Furthermore, no warranty will be valid.

2.8 Adverse Patient Symptoms



If the patient experiences discomfort or any of the following symptoms while using the Vivo 30, a physician or responsible clinician shall be contacted immediately:

- Bloating feeling from excessive swallowing of air while awake
- Air continually leaking from the mouth while sleeping
- Dryness of air passages or nose
- Ear pain, runny nose or sinus discomfort
- Day time sleepiness
- Disorientation or memory lapse
- Mood change or irritability
- Skin sensitivity

2.9 Usage of Oxygen



- The presence of oxygen can speed up combustion of inflammable materials.
- If oxygen has been prescribed, connect the oxygen supply tube to the appropriate oxygen port of the nasal mask or breathing system connector.
- At a fixed flow rate of supplemental oxygen flow, the inhaled oxygen concentration will vary, depending on the pressure delivered, patient's breathing pattern, mask selection, and leak rate.
- When oxygen is used with the Vivo 30, the oxygen flow must be turned off when the Vivo 30 is not operating.
- Ventilate the room adequately.
- Do not smoke in a room where oxygen is being used.
- Naked light bulbs and other sources of ignition must be kept a minimum of 2 metres away from the oxygen cylinder or any part of the patient circuit.
- Do not use aerosols or solvents close to the oxygen supply, even when the oxygen supply is shut off.
- When the Vivo 30 is not in operation, and the oxygen flow is left on, oxygen delivered into the patient tubing may accumulate within the machine enclosure. Oxygen accumulated in the machine enclosure will create a risk of fire.

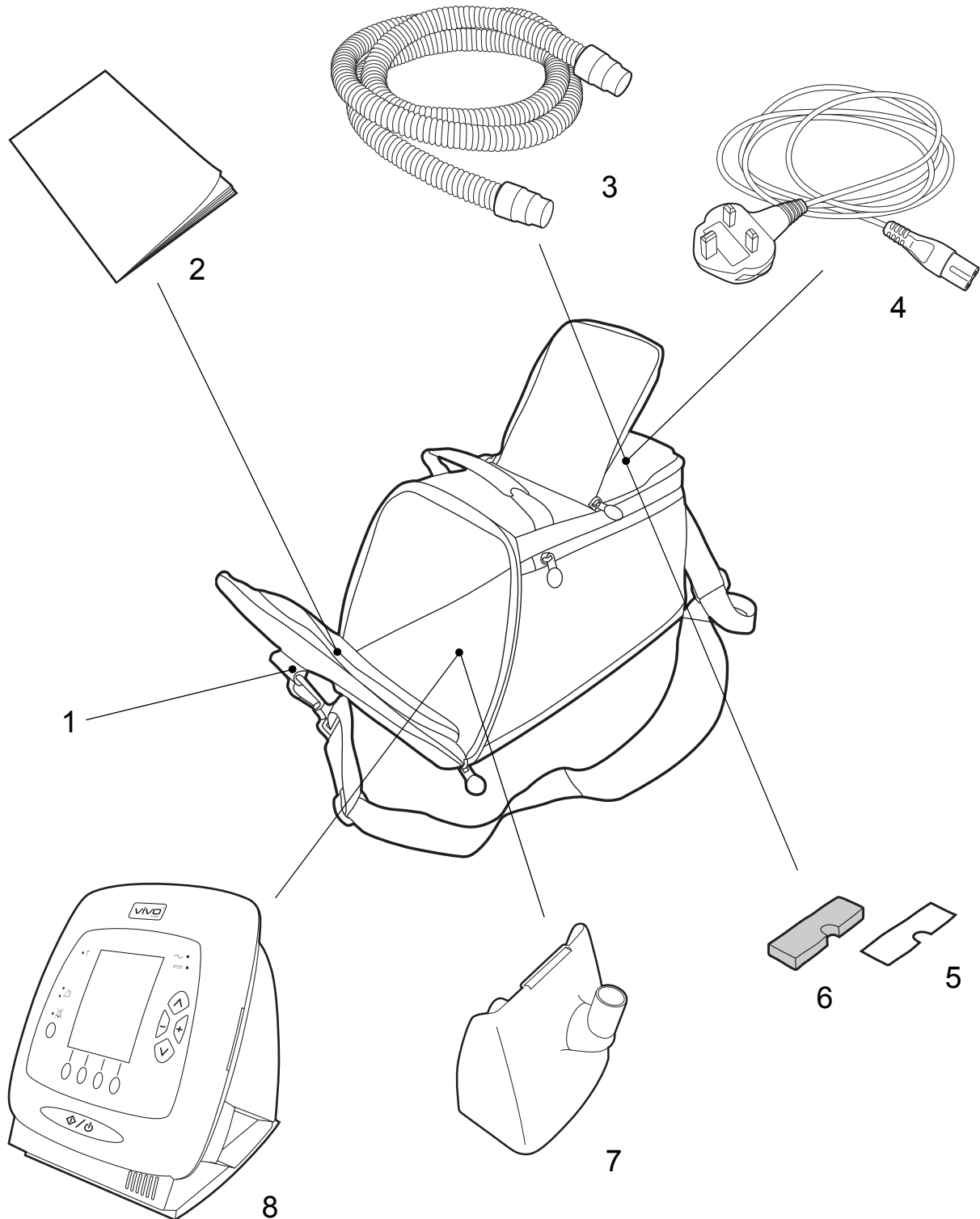


- Supplemental oxygen may trigger the low leakage alarm prematurely.
- Supplemental oxygen flow may not exceed 15 litre/min.
- Supplemental oxygen affects the accuracy of the volume and flow measurements.

3 Product Description

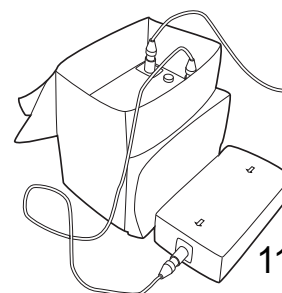
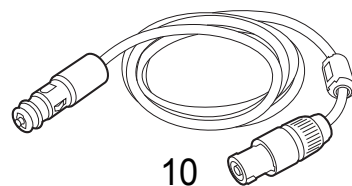
3.1 Main Components

The Vivo 30 system contains the following components:



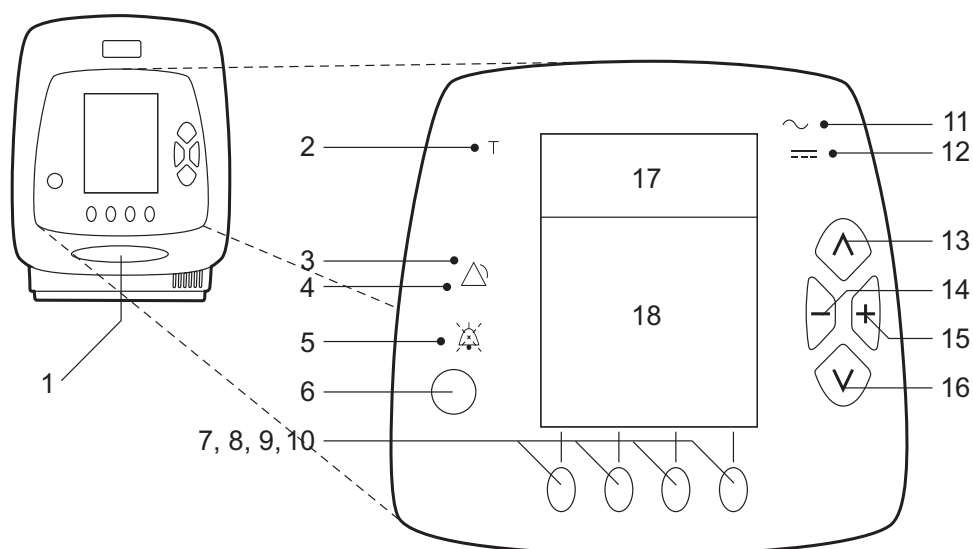
No.	COMPONENT	FUNCTION	PART NO.
1	Carry bag	Storage for transportation	003519
2	User manual	Product and usage information	003822
3	Patient tube		004465
4	Power cord		003521 (EU: 003520)
5	Filter (white, disposable)	Inlet air filtration	003526
6	Filter (grey, washable)	Inlet air filtration	003527
7	Rear lid	For usage without the HA 20 humidifier	003591
8	Vivo 30 main unit		

3.2 Accessories



No.	COMPONENT	FUNCTION	PART NO.
9	HA 20 Humidifier	Humidifies patient air	2230 XX
10	Battery cable 12/24 V DC		004258
11	EB 2 Battery kit	Includes: <ul style="list-style-type: none"> • Charger • Trafobox • Isolation • Battery pack • Carry bag • Power cord 24 V AC • Power cord 24 V DC • Power cord mains • EB 2 User manual 	004128

3.3 The Vivo 30's Front Panel

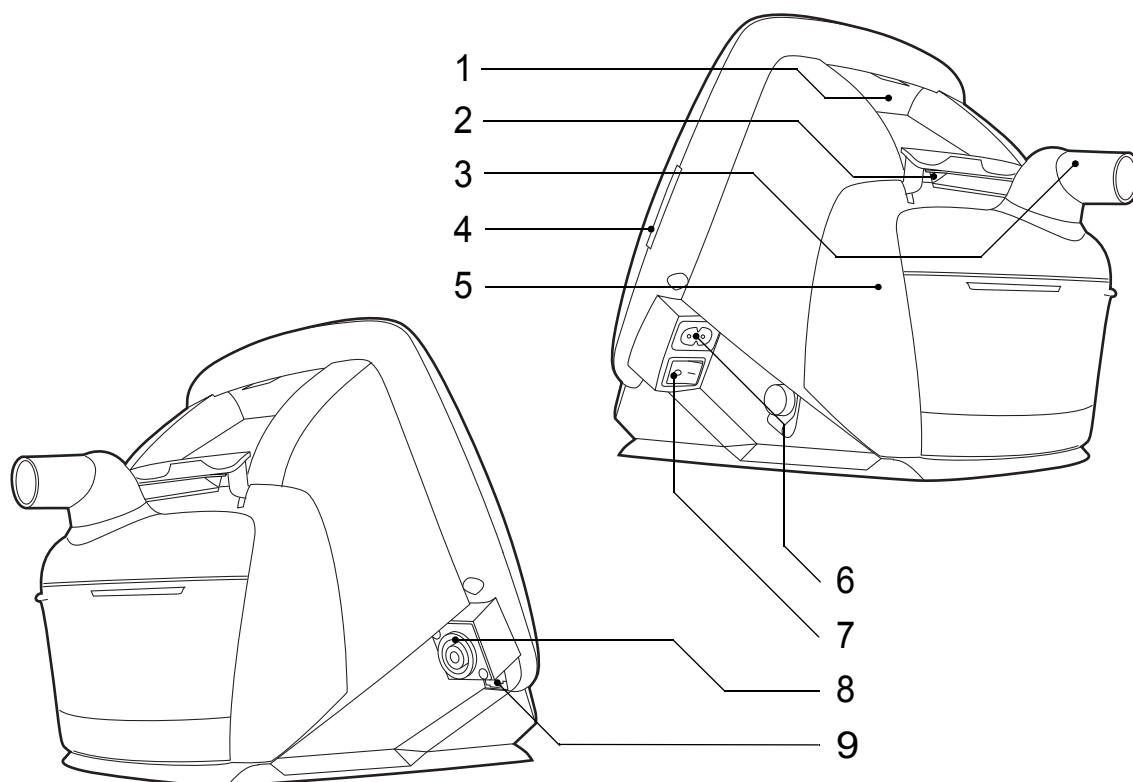


No.	USER BUTTONS	FUNCTION
1	Start/Stop	Start/Stop ventilation treatment
6	Audio pause	Pause the alarm sound
7-10	Function/Navigation	Function according to display
13-16	Navigation/Setting	Navigation in current menu selection/ Define settings

No.	LED	FUNCTION
2	Trigger	Patient breath trigger indication
3-4	Alarm (red & yellow)	Alarm indication
5	Audio pause	Paused alarm sound indication
11	Mains	Power source: mains
12	External DC	Power source: External DC

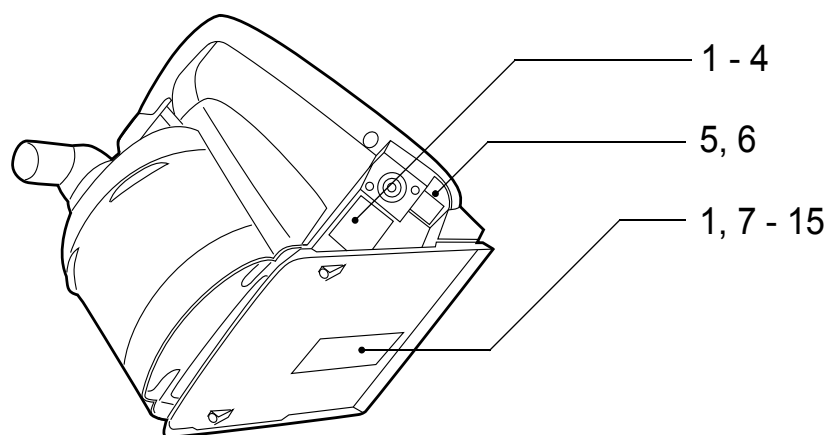
No.	DISPLAY WINDOW	FUNCTION
17	Monitoring section	Current treatment data
18	Active section	Adjustable settings








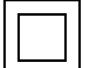
3.4 The Vivo 30's Back and Side Panels









No.	ITEM	FUNCTION
1	Air inlet	Air path in, replaceable filters
2	Locking mechanism	Release and lock the HA 20 humidifier or rear lid
3	Air outlet	Air path out to the patient
4	Memory card slot	Read and write memory card
5	HA 20 humidifier	Patient air humidification
6	Mains inlet	Connection for an external mains power source
7	On/Off	Mains power on and off
8	External DC inlet	External DC power source connection
9	Data connection	Data cable connection The data connection port is only to be used by your care provider.

3.5 Equipment Designation and Safety Label



No.	SYMBOL	EXPLANATION
1		Model designation
2		Product number
3		Serial number
4		Date of manufacture: YYYY-MM
5		Data connection port (The data connection port is only to be used by your care provider.)
6		Caution. The data connection port is only to be used by your care provider.
7		Read user instructions.
8		Caution. Read the user manual thoroughly before using the Vivo 30.
9		Class II equipment; double insulation.

No.	SYMBOL	EXPLANATION
10		Body floating (IEC 60601-1 Type BF, Isolated Applied Part)
11		Certified by CSA.
12		CE marking applies in accordance with the directive MDD 93/42/EEC.
13		Certified by GOST-R.
14		Read “Disposal” on page 53 for information about recycling and disposal.
15		Manufacturer

4 Functions and Parameters of the Vivo 30

This chapter includes descriptions of the modes and parameters used for controlling the ventilation of the Vivo 30.

4.1 Ventilation Mode

The following modes can be selected for the Vivo 30:

- PCV mode (Pressure Control Ventilation)
- PSV mode (Pressure Support Ventilation)
- CPAP mode (Continuous Positive Airway Pressure)

4.2 Settings

The Ramp Function (optional)

The ramp function is used for increasing the EPAP and IPAP pressure during a set time, the IPAP pressure starts at 2 cmH₂O above the ramp start pressure.

During CPAP mode the ramp function provides a pressure increase from the ramp start pressure to the set CPAP pressure during a set time.



The low pressure alarm will be disabled during the ramp time period.

4.3 Standby and Operating Mode

Standby mode is defined as the state of the Vivo 30 when mains is connected and the On/Off switch is on, but without starting the Vivo 30 with the Start/Stop button.

Operating mode is defined as the state of the Vivo 30 when the fan is operating and producing an air flow.

Enter operating mode by switching the Vivo 30 on (see “Switching the Vivo 30 On and Off” on page 26). Enter standby mode by switching the Vivo 30 off again.

Some operations such as accessing the memory card and setting time and date are only available in standby mode.

4.4 Low Leakage Detection

The Vivo 30 automatically detects if the mask and tubing fitted to the device has sufficient leakage. If the leakage measured is below the recommended level it will generate a Low Leakage Alarm. The Vivo 30 will continue to deliver breaths during the alarm.



Check mask and tubing and if necessary clean ventilation holes if clogged.

4.5 Humidifier (optional)

The humidifier function is adjustable to provide additional humidity to the patient air.

5 Using the Vivo 30

5.1 Set up the Vivo 30 Before Use

Always perform the following checks before using the Vivo 30:

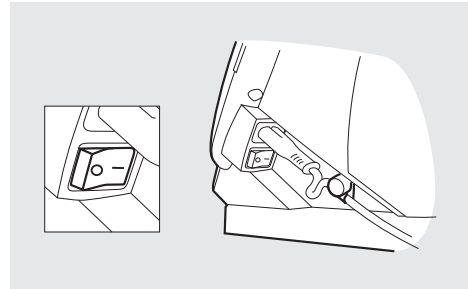
- 1 Connect a cleaned or new patient circuit to the Vivo 30.
- 2 Connect the Vivo 30 to the mains supply.
- 3 Switch on the Vivo 30 main power using the On/Off switch on the side panel.
- 4 Press the Start/Stop button on the front panel. Check that a short sound signal is heard. If there is no signal, do not use the Vivo 30 and contact your service provider.
- 5 Disconnect the power cord for more than 5 seconds. Check that the audible alarm for power failure sounds. If the power failure alarm is not heard, do not use the Vivo 30 and contact your service provider.
- 6 Reconnect the power cord. The alarm shall silence.
- 7 Put on the mask and adjust its fit.
- 8 Ensure that the settings are adjusted as prescribed.

The Vivo 30 is ready for use.

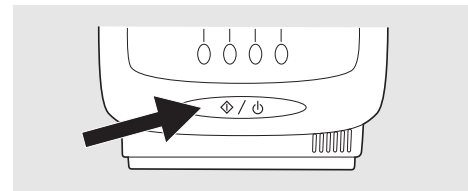
5.2 Switching the Vivo 30 On and Off

Switching On

1 Make sure the mains supply is connected and the On/Off switch is switched on.

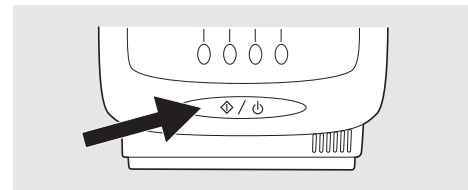


2 Turn on the Vivo 30 by pressing the Start/Stop button on the front panel for 2 seconds. A short sound signal is heard.

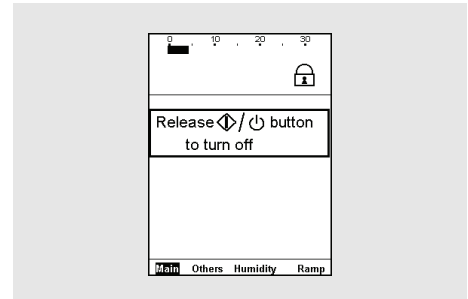


Switching Off

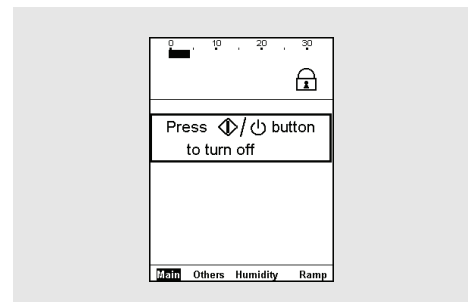
1 Press the Start/Stop button on the front panel for 2 seconds (max 4 seconds).



2 Release the Start/Stop button when the message is shown in the display window.

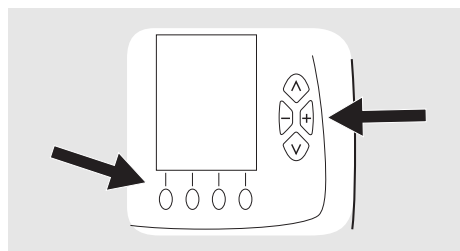


3 Turn off the Vivo 30 by pressing the Start/Stop button again.

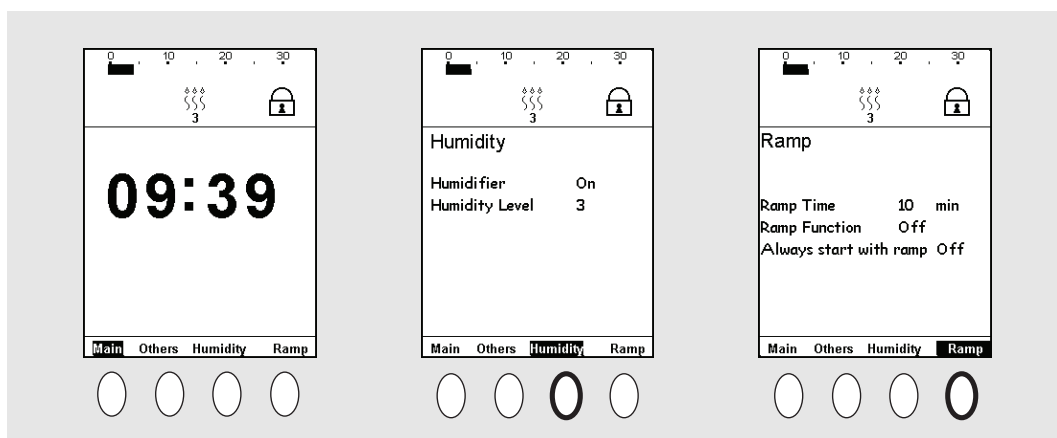


5.3 Using the Menu

Use the four navigation buttons and the up, down, “+” and “-” buttons on the front panel to navigate the Vivo 30 menu.



Read chapter “The Vivo 30’s Front Panel” on page 19 for exact position of the buttons.

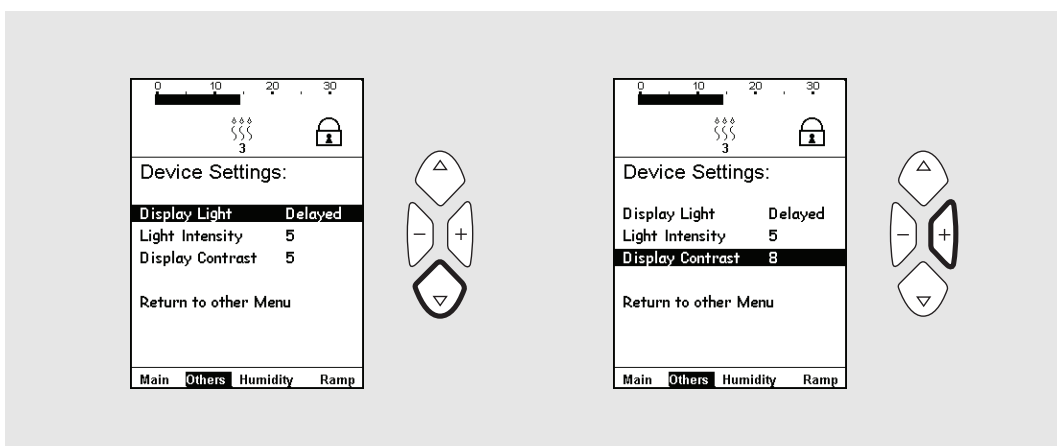


The navigation buttons are used to view the different sections defined above each navigation button. The same navigation button can also be used to view additional information in some sections.








Use the up or down button to enter the menu list.

During operation and when no button has been pressed for 20 seconds, the menu will automatically switch to the clock.



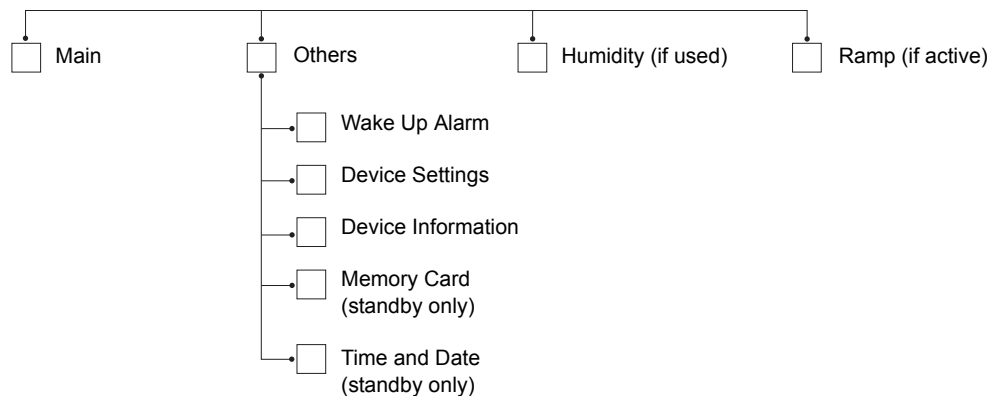
The up and down buttons are used to select values in a section. The plus and minus buttons are used to alter a value.

Symbols Used in the Menu

SYMBOL	DESCRIPTION	UNIT
	Alarm time active	Hour : Minute
	HA 20 humidifier active	1 to 9, Off
	Ramp active	Minute
	Panel locked	On, Off
	Panel locked by the Breas Vivo PC software	On, Off

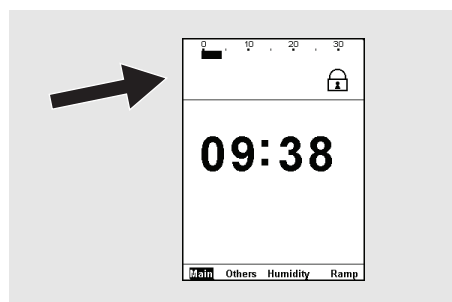
Overview

The Vivo 30 menu has the following section layout:



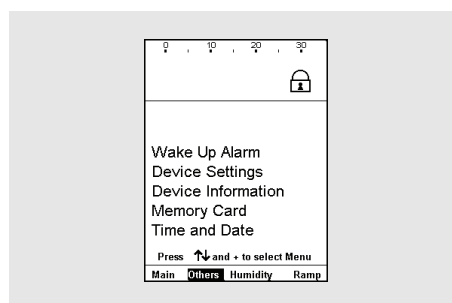
Main Menu

The monitoring section contains a bargraph to display the current pressure. Further, information about the alarm time, HA 20 humidifier, remaining ramp time and the panel lock is shown.

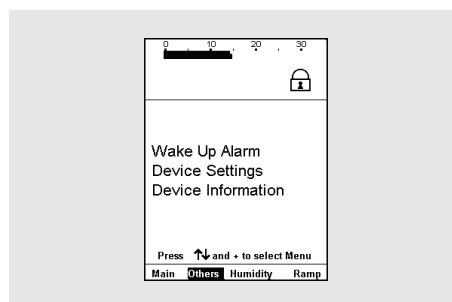


The Others Menu

The menu list for “Others” in standby mode (with HA 20 humidifier connected).

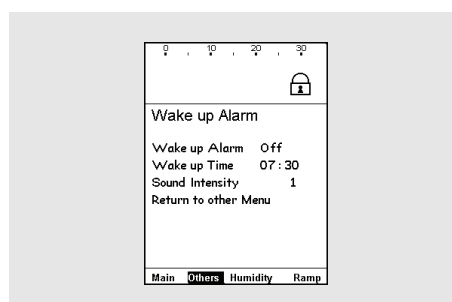


The menu list for “Others” in operating mode.



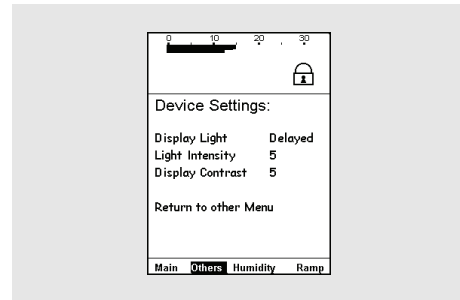
Wake up Alarm

Navigate to the section “Others” and select “Wake up Alarm” to reach the “Wake up Alarm” page.



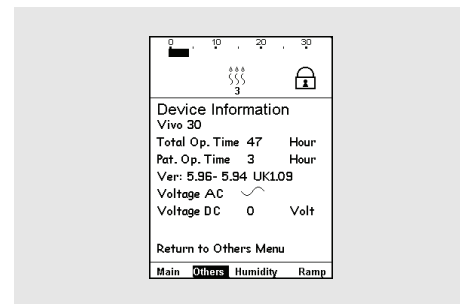
Device Settings

Navigate to the section “Others” and select “Device Settings” to reach the “Device Settings” page.



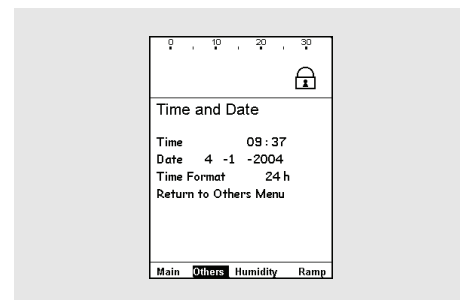
Device Information

Navigate to the section “Others” and select “Device Information” to reach the “Device Information” page.



Time and Date

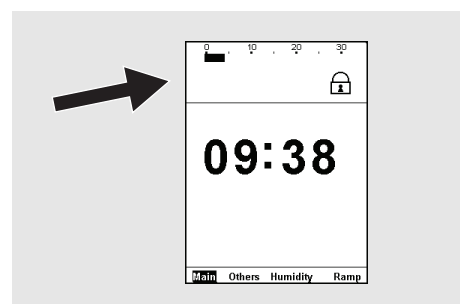
Navigate to the section “Others” and select “Time and Date” to reach the “Time and Date” page.



5.4 Monitoring Section

The monitoring section provides a display of the current treatment data. The monitoring section is located in the top of the display window:

The monitoring section contains a bargraph, information about the alarm time, HA 20 humidifier, remaining ramp time and the panel lock is shown.



5.5 Using the HA 20 Humidifier



Information about safety, warnings, product description, installation, usage, cleaning, maintenance and technical specifications can be found in the Breas HA 20 Humidifier User manual.



Read the chapter “Humidification” on page 13 carefully to make sure all conditions are fulfilled and considered.



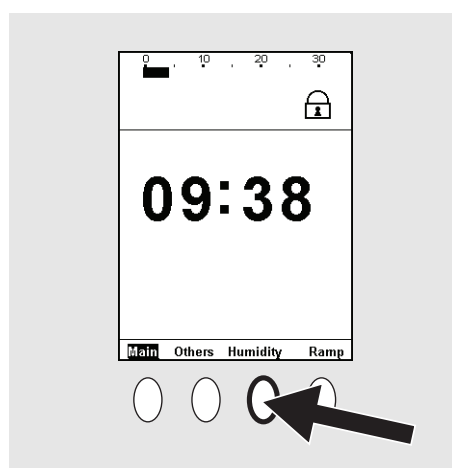
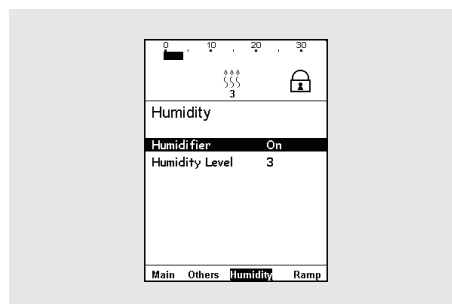
If the mains power source fails and an external battery activates, the HA 20 humidifier will be turned off automatically. It must be activated again manually, if humidification during battery use is necessary.

The HA 20 humidifier is intended to humidify the patient air. The HA 20 humidifier must be installed in order to access and navigate to the humidifier setting on the Vivo 30 menu. The HA 20 humidifier can only be activated if the Vivo 30 is operating.

Navigate to the “Humidity” page. The humidity setting range from 1 to 9, where 9 generates the maximum humidity.

Always set the humidity control to the setting recommended by your doctor.

The HA 20 humidifier can be activated and deactivated by pressing the humidifier soft key for more than 1 second.



If the HA 20 humidifier is disconnected and reconnected after usage according to the instructions in the HA 20 Humidifier User manual, the Vivo 30 will remember the humidity setting used.

5.6 Using Batteries

A battery is intended as a backup power source if the primary mains power source fails.

Power Source Priority

- 1 Mains power
- 2 External DC

When the mains supply fails, the Vivo 30 will switch to the external battery if installed and show a message in the display window.



Using the HA 20 humidifier while operating on a battery significantly decreases the battery operation time.

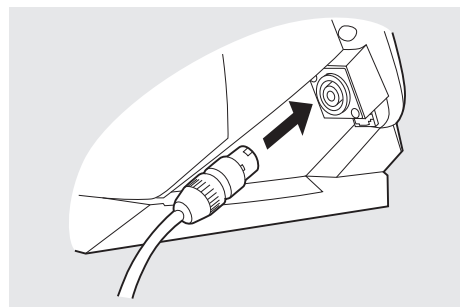
External Battery

The Vivo 30 can be operated from a 12 V or a 24 V DC external battery.

- Use the battery cable 12/24 V DC or the Breas external EB 2 Battery Pack. If using other DC power than Breas external EB 2 Battery Pack, check carefully that the voltage is 12 V or 24 V.
- Check the polarity of the external battery before connecting it to the Vivo 30.

With an external battery connected, the Vivo 30 will automatically switch over to the external battery source if the mains power cord is removed or if the mains power supply fails. The external DC level is shown under “Others, Device information” in the menu.

- 1 Connect the external DC cable to the Vivo 30. Make sure that it is fitted correctly.
- 2 Connect the other end of the cable to the battery source.





- Only use a Breas external DC cable to connect the Vivo 30 to the external battery.
- An external battery must be disconnected when the Vivo 30 is switched off, otherwise the battery can be discharged.

External Battery Operation Time

The operation time is dependent on the battery condition, its capacity, the ambient air temperature and the Vivo 30 settings.

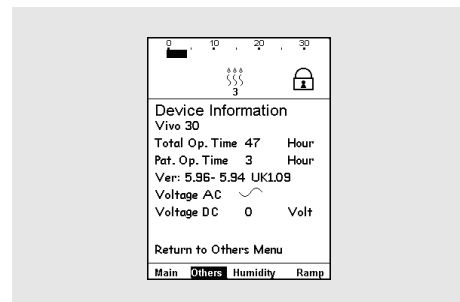
SETTING	VALUE
EPAP	8
IPAP	20
Breath Rate	15

ENVIRONMENTAL CONDITIONS	
Ambient temperature	20°C (68°F)
Altitude	Sea level

Using the settings above, the operating time using a fully charged new Breas EB 2 battery pack is approximately 6 hours.

5.7 Vivo 30 Operating Time

The Vivo 30 records two types of operating times. They can be viewed on the page “Device Information” in the “Others” section.



Total Operating Time

Shows the total number of hours the Vivo 30 have been operating.

Patient Operating Time

Shows the total number of hours a patient have been using the Vivo 30 for breathing therapy.

6 Preparing the Vivo 30 for Use

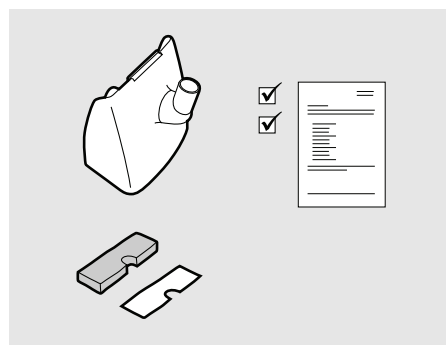


Read the chapter “Safety Information” on page 7 before setting up and using the Vivo 30.

6.1 Installing the Vivo 30

When using the Vivo 30 for the first time, follow the instructions below:

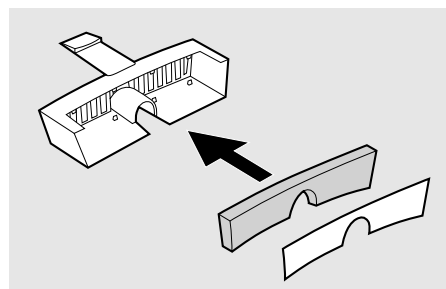
1 Check that all main components and ordered accessories have been delivered (refer to the packing note or the invoice, if available).



2 Ensure that the equipment is in good condition.

3 If stored more than 1 month, connect the Vivo 30 to the mains supply and switch on the On/Off switch to recharge the alarm battery in standby mode.

4 Check that the air filters are installed.

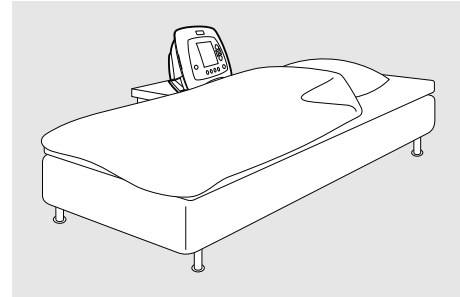


6.2 Placing the Vivo 30

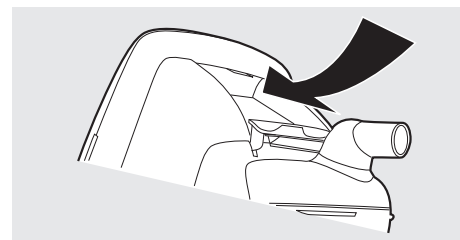


Read the chapter “Environmental Conditions” on page 10 carefully to make sure all conditions are fulfilled and considered.

1 Place the Vivo 30 on a solid, flat surface facing towards the patient. The Vivo 30 should be placed lower than the patient in order to prevent the device from falling on the patient, as well as preventing condensed water to reach the patient.



2 Make sure that nothing can block the patient air inlet at the rear of the Vivo 30.



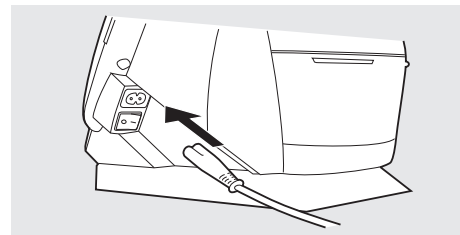
6.3 Connecting the Vivo 30 to the Mains Supply



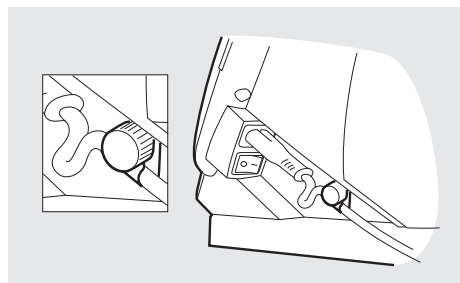
Read the chapter “Electrical Safety” on page 9 carefully to make sure all conditions are fulfilled and considered.

To connect the Vivo 30 to the Mains Supply:

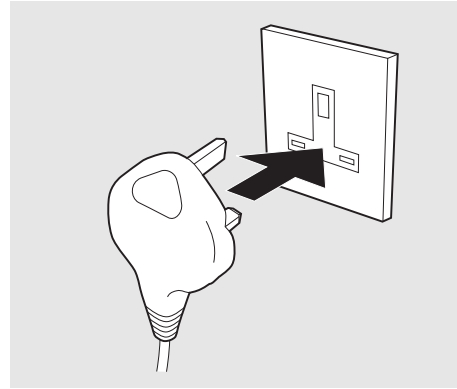
1 Plug the power cord into the power inlet of the Vivo 30.



2 Create a small loop on the cable in order to prevent stretching. Secure the power cord using the cable holder.



3 Connect the power cord to the mains supply.

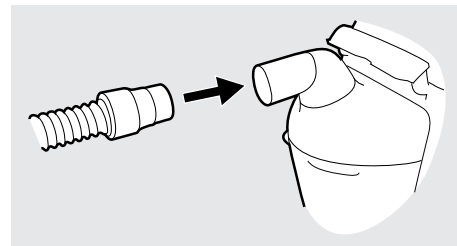


6.4 Connecting the Patient Circuit



Read the chapter “Usage of Patient Circuit” on page 11 carefully to make sure all conditions are fulfilled and considered.

1 Connect the patient tube to the air outlet.



2 Connect the other end of the patient tube to the mask and the leakage port, if applicable.

Intentional Leakage

The leakage from the mask or leakage/exhalation port should be at least 12 litre/min at 4 cmH₂O, to prevent re-breathing of exhaled air. The recommended mask leakage is 20 to 40 litre/min at 10 cmH₂O pressure.

This leakage may be achieved by:

- integrated leakage in the mask
- an adjoining leakage port

7 Alarms



The adjustable alarm settings should be re-evaluated whenever a change in settings is made on the Vivo 30.

This chapter describes the alarm functions used for the Vivo 30.

7.1 Alarm Function

The alarm function of the Vivo 30 consists of the alarm LEDs on the front panel, an audible alarm, and messages on the LCD display (see “The Vivo 30’s Front Panel” on page 19 for an overview of the position of the LEDs and the LCD display).

Alarm Indication



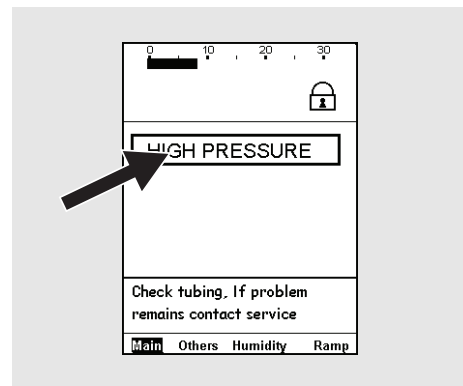
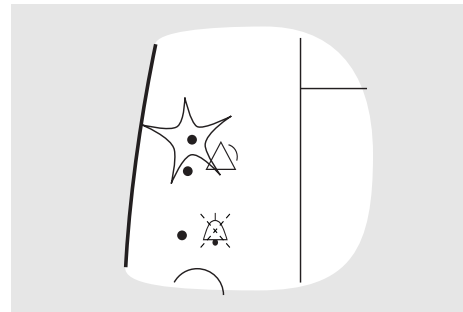
Always check that the alarm sound level is set high enough, according to the ambient noise level.



As soon as an alarm condition is set, the Vivo 30 will alarm without delay.

When an alarm condition arises the alarm is indicated in three ways:

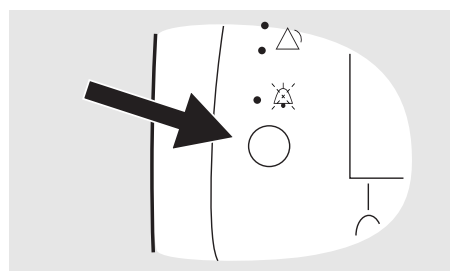
- Colour LED on the panel: indicates the priority of the active alarm condition.
 - High priority: Red colour, flashing twice per second.
 - Medium priority: Yellow colour, flashing every 2 seconds.
- Alarm text in display: displays the name of the active alarm condition.



- Audible signals: indicates the priority of the active alarm condition.
 - High priority: 3 signals followed by 2 more. The signal sequence is repeated after a 0.5 seconds pause.
 - Medium priority: 3 signals only, with a lower frequency than the high priority alarm. The signal sequence is repeated after a 6 seconds pause.
 - Function failure. Same signal as the high priority alarm or a constant signal, depending on the kind of function failure.

Audible Signal Pause and Reactivation

The audible signal can be paused by pressing the Audio Pause button. If the ventilator still registers the same alarm after 60 seconds, and the Audio Pause button was pressed, the audible signal will sound again.



Once the audible signal has been paused, it can be reactivated by pressing the Audio Pause button again for 2 seconds.

If a new alarm condition occur during the silence period, the audible signal will be reactivated.



To ensure the timely detection of any new alarm condition, never leave a patient unattended while the audible signal is paused.

Alarm Reset

An alarm will automatically be reset once the cause of the alarm has been corrected.



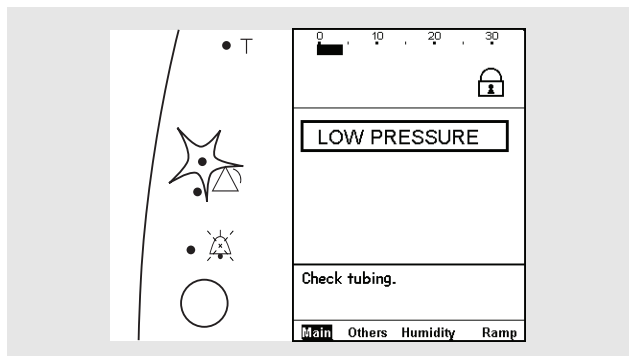
If an alarm condition cannot be corrected, discontinue use and refer the Vivo 30 for service.

7.2 Physiological Alarm

Low Pressure Alarm

ITEM	DESCRIPTION
Definition	A low pressure alarm will be given when the Vivo 30's pressure fails to reach the low pressure alarm limit for 15 seconds.
Possible cause	<ul style="list-style-type: none">• Disconnection of patient circuit.• Setting is higher than IPAP.• Leakage from the mask or other components of the patient circuit.
Ventilator action	The Vivo 30 will continue to give breaths with the same settings.

Indication

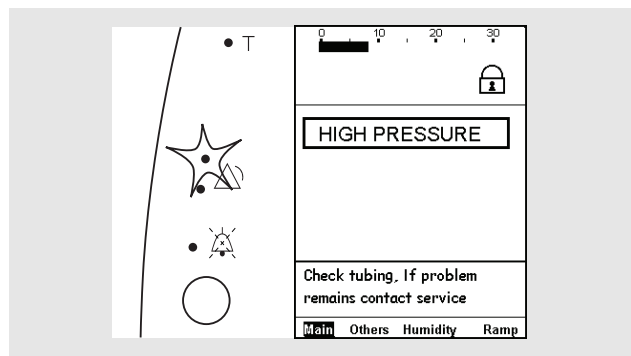


The alarm is given audibly with a high priority signal and visibly by the red alarm LED and a display message.

High Pressure Alarm

ITEM	DESCRIPTION
Definition	A high pressure alarm will be given when the Vivo 30's pressure exceeds 10 cmH ₂ O more than IPAP, for 3 consecutive breaths.
Possible cause	Only activated under exceptional conditions, such as a strong cough during the ventilator's inspiration phase.
Ventilator action	The Vivo 30 will terminate inspiration from the first high pressure breath. The Vivo 30 will then continue to give breaths with same settings.

Indication

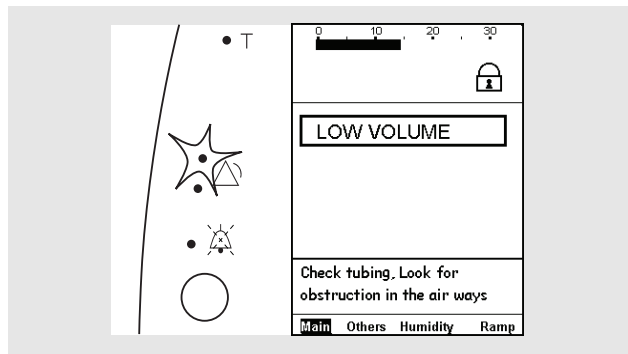


The alarm is given audibly with a high priority signal and visibly by the red alarm LED and a display message.

Low Volume Alarm

ITEM	DESCRIPTION
Definition	A low volume alarm will be given when the Vivo 30's volume fails to reach the low volume alarm limit for 15 seconds (45 seconds after start-up and after cancelling a high leakage alarm).
Possible cause	<ul style="list-style-type: none">• Restrictions in airways.• Obstructed or occluded patient circuit.
Ventilator action	The Vivo 30 will continue to give breaths with the same settings.

Indication

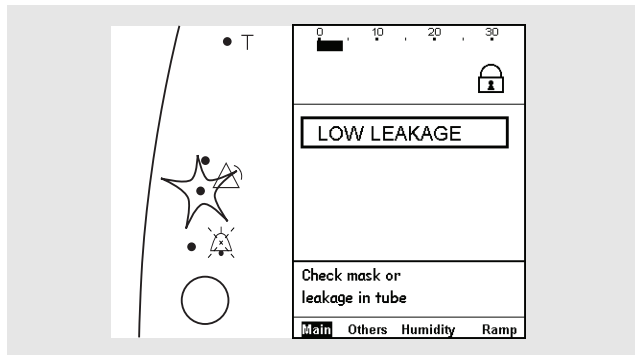


The alarm is given audibly with a high priority signal and visibly by the red alarm LED and a display message.

Low Leakage Alarm

ITEM	DESCRIPTION
Definition	A low leakage alarm will be given when the measured flow is lower than the expected leakage flow at set pressure.
Possible cause	<ul style="list-style-type: none">• Incorrect patient circuit leakage.• Obstructed or occluded patient circuit.
Ventilator action	The Vivo 30 tries to continue delivering breaths according to settings.

Indication

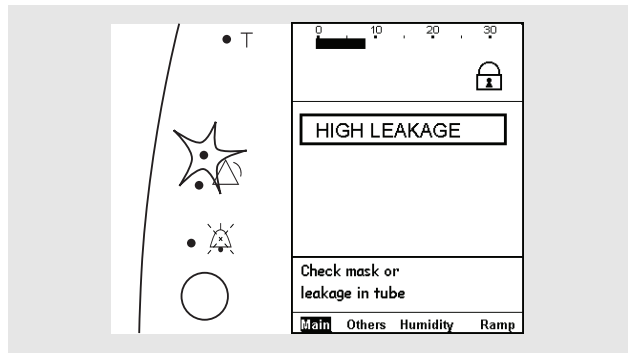


The alarm is given audibly with a medium priority signal and visibly by the yellow alarm LED and a display message.

High Leakage Alarm

ITEM	DESCRIPTION
Definition	A high leakage alarm will be given when the measured flow exceeds the expected leakage flow at set pressure during more than 15 seconds.
Possible cause	<ul style="list-style-type: none">• Leakage in patient circuit.• The patient has removed the mask.
Ventilator action	The Vivo 30 tries to continue delivering breaths according to settings.

Indication



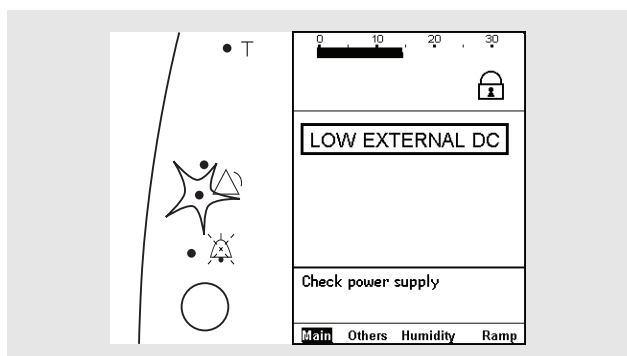
The alarm is given audibly with a high priority signal and visibly by the red alarm LED and a display message.

7.3 Technical Alarm

Low External DC Warning

ITEM	DESCRIPTION
Definition	A low external DC warning will be given when the external DC is the last power source and it falls below the voltage warning limit.
Possible cause	A discharged external battery.
Ventilator action	The Vivo 30 will continue to give breaths with the same settings.

Indication

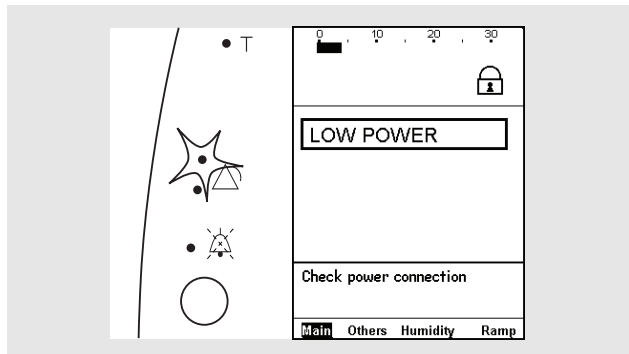


The warning is given audibly with a medium priority signal and visibly by the yellow alarm LED and a display message.

Low Power Alarm

ITEM	DESCRIPTION
Definition	A low power alarm will be given when the last power source has fallen lower than its voltage alarm limit.
Possible cause	<ul style="list-style-type: none">• Lost connection to mains power.• Discharged batteries.
Ventilator action	<p>The Vivo 30 stops giving breaths and gives an alarm for 2 minutes.</p> <p>If connected to mains with a too low voltage, the Vivo 30 will enter standby mode.</p>

Indication



The alarm is given audibly with a high priority signal and visibly by the red alarm LED and a display message.

Internal Function Failure Alarms

ITEM	DESCRIPTION
Definition	An internal function failure alarm will be given when the Vivo 30 has an internal function failure.
Ventilator action	The Vivo 30 will stop treatment.
Indication	The alarm is given audibly with a tone and visible by a display message at least for 120 seconds.
Ventilator reset	In order to stop the alarm the ventilator must be switched off by the On/Off switch on the side panel.

8 Cleaning the Vivo 30 and Replacement of Accessories

The patient-connected parts and the filter must be cleaned and replaced regularly to ensure correct function of the Vivo 30. All replaced parts must be disposed of in accordance with local environmental regulations regarding the disposal of used equipment and waste.

8.1 Cleaning the Vivo 30



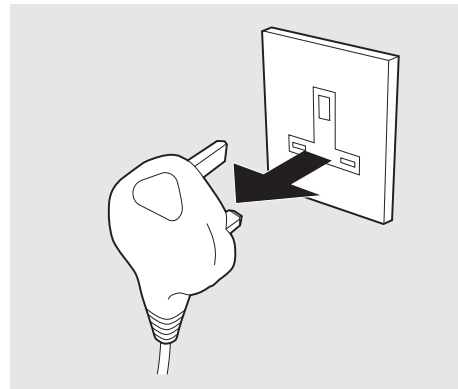
To avoid electrical shock, disconnect the mains supply to the Vivo 30 before cleaning. Do not immerse the Vivo 30 into any fluids.



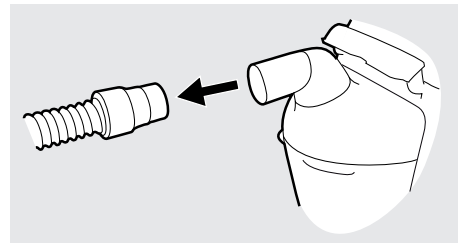
- Always be careful when cleaning to ensure that you do not damage any equipment.
- Fluid must not be allowed to enter into the Vivo 30.
- Do not sterilise the Vivo 30.

Main Unit

1 Switch off the Vivo 30 and disconnect the mains supply.



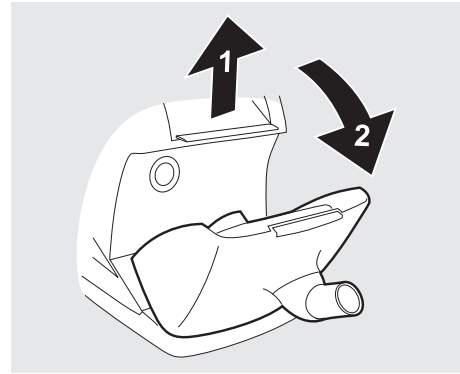
2 Remove the patient circuit.



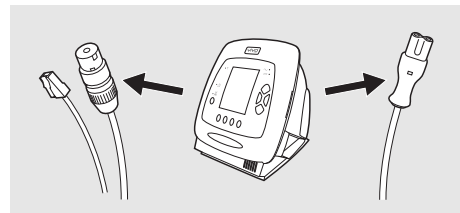
3 At regular cleaning after normal use, keep the rear lid or the HA 20 heating unit attached. If attached, allow the HA 20 humidifier to cool down for ten minutes. Detach only the HA 20 water chamber.

In case a more thorough cleaning is needed, detach the rear lid or the HA 20 heating unit.

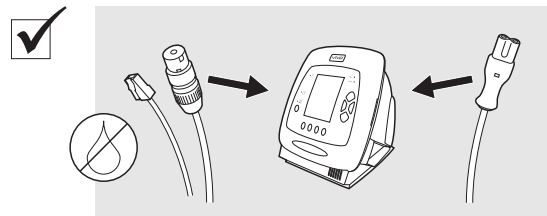
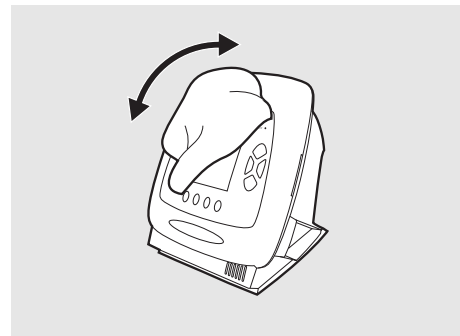
4 Disconnect all electric cables.



5 Clean the outside of the Vivo 30 using a lint-free cloth and a mild soap solution. If the surface of the Vivo 30 needs to be disinfected, this can be done with Virkon® or Gigasept®.



6 Reconnect the patient circuit. Make sure all parts are dry before the Vivo 30 is put into operation.



HA 20 Humidifier

The HA 20 humidifier should be cleaned, maintained and replaced in accordance with the care provider's instructions.



For more information, see Breas HA 20 Humidifier User Manual.

Patient Circuit



The patient circuit should always be cleaned, disinfected and replaced in accordance with the care provider's instructions.

Always replace the patient circuit with a new one when the Vivo 30 is to be used by a new patient.

All parts that come into contact with the respiration gas must be cleaned.

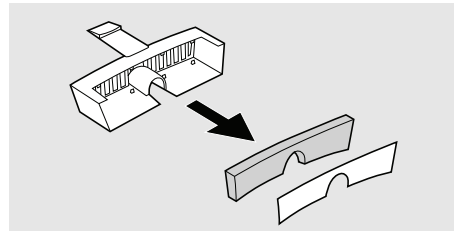
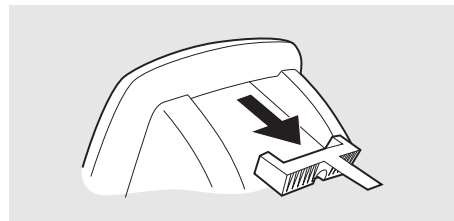
If using patient circuit parts recommended by Breas Medical AB, clean as follows:

- 1 Place the dismantled parts in hot water containing mild detergent.
- 2 Remove fouling with a brush.
- 3 Rinse parts thoroughly under running hot water.
- 4 Shake water out of all parts.
- 5 Dry the parts completely.
- 6 Store in dust-free location.

Check the patient circuit for damage regularly. In case of damage, replace the circuit.

8.2 Cleaning and Replacing the Patient Air Filters

The patient air filters are located in the filter cassette at the rear of the ventilator. There are two types of filters: washable filter and disposable filter.



Washable Filter (grey)

Replace the washable filter at least once a year. Wash the filter at least once a week.

- 1 Wash the filter using warm water and a mild soap.
- 2 Rinse thoroughly.
- 3 Dry the filter by squeezing it out in a towel. Do not wring the filter.

Disposable Filter (white)

Replace the filter at least every 4th week, or more often when used in high pollution or pollen-rich environments.



Do not wash or reuse the disposable filter.

9 Maintenance



WARNING!

- Vivo 30 should be subjected to maintenance, service and control and any applicable upgrades, in accordance with Breas service instructions.
- Vivo 30 shall only be repaired or modified in accordance with Breas service manuals, technical bulletins, and any special service instructions, by service technicians that have been authorized after Breas Vivo 30 service training, or have an equivalent technical knowledge on medical device.
- Do not under any circumstances attempt to service or repair the Vivo 30 yourself. If you do so, the manufacturer will no longer be responsible for the performance and safety of the Vivo 30.

DEVIATION FROM THESE SERVICE INSTRUCTIONS MAY LEAD TO RISK OF PERSONAL INJURY!

9.1 Regular Maintenance Control

Regular maintenance inspections and controls shall be carried out at least every 12 months. Maintenance control according to the Vivo 30 Service Manual.



Do not use the device and contact your responsible care provider for an inspection of the device in the event of:

- Unexpected patient symptoms during treatment.
- Unexplainable or sudden pressure, performance or sound changes during operation.
- Suspected damage to the device.

9.2 Service and Repair

The service and repair of the Vivo 30 must be carried out by authorized service personnel in accordance with Breas service instructions. Service inspections must always be carried out after any repair of the device.



Authorized service workshops can order the Vivo 30 Service Manual that contains all technical documentation required for the maintenance and service of the Vivo 30.

9.3 Storage

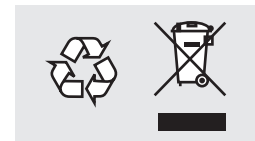
Empty, clean and dry the HA 20 humidifier (if applicable) before storage of the Vivo 30.

9.4 Disposal

The Vivo 30, any accessories and all replaced parts must be disposed of and recycled in accordance with the local environmental regulations regarding the disposal of used equipment and waste.



Batteries used with the Vivo 30 shall be recycled in accordance with the local environmental regulations.



10 Technical Specifications

10.1 Data



The Vivo 30 and its packaging do not contain any natural rubber latex.

SETTING/VALUE	RANGE/PERFORMANCE	RESOLUTION
Ventilation modes	<ul style="list-style-type: none"> • PSV (Pressure Support Ventilation) • PCV (Pressure Control Ventilation) • CPAP (Continuous Positive Airway Pressure) 	
Device modes	<ul style="list-style-type: none"> • Clinical • Home 	
EPAP	2 cmH ₂ O to 20 cmH ₂ O or IPAP -2 cmH ₂ O Tolerance: $\pm 2\%$ of the maximum value and $\pm 10\%$ of the set value.	0.5 below 10 cmH ₂ O 1.0 above 10 cmH ₂ O
IPAP	4 to 30 cmH ₂ O Tolerance: $\pm 2\%$ of the maximum value and $\pm 10\%$ of the set value.	0.5 below 10 cmH ₂ O 1.0 above 10 cmH ₂ O
CPAP	4 to 20 cmH ₂ O. Tolerance: $\pm 2\%$ of the maximum value and $\pm 10\%$ of the set value.	0.5 cmH ₂ O
Breath rate	4 to 40 breaths per minute (BPM), tolerance: $\pm 10\%$ of set value.	1 BPM
Inspiration time	0.3 to 5 sec, tolerance: $\pm 10\%$ of set value.	0.1 sec

SETTING/VALUE	RANGE/PERFORMANCE	RESOLUTION
Min inspiration time	Off, 0.3 to 3 sec	0.1 sec
Max inspiration time	0.3 to 3 sec, Off	0.1 sec
Rise time	1 to 9	1
Inspiratory trigger effort level	1 to 9, Off.	1
Expiratory trigger effort level	1 to 9, where 1 is the lowest effort and 9 is the highest effort setting.	1
Ramp function	On, Off, Disabled	
HA 20 humidifier	Settings: Off, 1 to 9, corresponds to 10 to 30 mgH ₂ O/l, <100% RH. Heat-up time from 23°C (73°F): less than 1 hour. Max gas temperature at patient port: 43°C (109°F).	1
Audible alarm level	1 to 9, where 1 is the lowest and 9 is the highest volume setting.	1
Maximum flow	> 200 litre/min	
Maximum limited pressure during single fault condition	PCV, PSV: 60 cmH ₂ O CPAP: 30 cmH ₂ O	
Maximum steady limiting pressure	Set IPAP + 10 cmH ₂ O, tolerance: ±10%	
Max flow in CPAP mode	1/3 of max press.: 110 litre/min 2/3 of max press.: 150 litre/min Max pressure: 155 litre/min	

SETTING/VALUE	RANGE/PERFORMANCE	RESOLUTION
Breathing resistance under single-fault	4 cmH ₂ O at 30 litre/min 6 cmH ₂ O at 60 litre/min	
Sound level at 10 cmH ₂ O	Less than 30 dB(A)	Measured at 1 m

INDICATOR	RANGE/SPECIFICATION	RESOLUTION
Pressure	0 to 30 cmH ₂ O	±2% of full scale and ±4% of actual reading
Estimated tidal volume	0 to 9.99 litre (BTPS, Body Temperature and Pressure Saturated)	At sea level: ±20% or ±20 ml, whichever is the greatest.
Leakage	0 to 99.9 litre/min (BTPS)	1 litre/min, ±20%
Total rate	0 to 60 BPM (Breath Per Minute)	1
I:E	1:10 to 10:1	0.1 unit, ±1 unit

ALARM	SPECIFICATION	INDICATION
Auditory alarm signal pressure	35 to 85 dB(A)	±5 dB(A). Measured at 1 m.
Low pressure alarm	2 cmH ₂ O to IPAP resolution 1 cmH ₂ O	Red LED, audible alarm and a warning message on the display.
High pressure alarm	Self adjusting	Red LED, audible alarm and a warning message on the display.
Low volume alarm	Off, 0.03 l to 2.0 l resolution 0.05 l	Red LED, audible alarm and a warning message on the display. Accuracy: 0.05 l.
Low leakage alarm	On/Off	Yellow LED, audible alarm and a warning message on the display.

ALARM	SPECIFICATION	INDICATION
High leakage alarm	Self adjusting	Red LED, audible alarm and a warning message on the display.
Low External DC Warning	Ext. DC 12 V: 11.3 V Ext. DC 24 V: 22.7 V	Yellow LED, audible alarm and a warning message on the display.
Low power alarm	mains: 65 ±15 V AC Ext. DC 12 V: 10.0 ±0.5 V Ext. DC 24 V: 20.0 ±0.5 V	Red LED, audible alarm and a warning message on the display.
Internal function failure alarms		Red or yellow LED, audible alarm and a warning message on the display.

POWER SUPPLIES	SPECIFICATION
Mains supply	100 to 240 V AC, tolerance: +10%/-20%, 50 to 60 Hz, max 140 VA
External battery	12/24 V DC, tolerance: +20%/-15% (10.5 to 15 V/20.4 to 30 V). Max 120 W with Breas external battery.

ENVIRONMENTAL CONDITIONS	SPECIFICATION
Operating temperature range	5 to 38°C (41 to 100°F)
Storage and transport temperature	-20 to +60°C (-4 to +140°F)
Ambient pressure range	600 to 1060 mbar, corresponding to ~4000 metres above sea level to ~375 metres below sea level, at normal atmospheric pressure.
Humidity	10% to 95%, non-condensing

OPERATING CONDITIONS	SPECIFICATION
Recommended leakage	20 to 40 litre/min at 10 cmH ₂ O
Minimum leakage	12 litre/min at 4 cmH ₂ O

DIMENSIONS	SPECIFICATIONS
W × H × D	190 × 225 × 223 mm (with rear lid)
Weight	3.1 kg (with rear lid)
Air outlet	22 mm male conical standard connector

11 Accessories

11.1 Breas Accessories List



Only use accessories recommended by Breas Medical AB. Breas Medical AB cannot guarantee the performance and safety for the use of other accessories with the Vivo 30.

The following Breas accessories are currently available for the Vivo 30:

DESCRIPTION	PART NO.
Carry bag	003519
Users manual	003822
Patient tube	004465
HA 20 Humidifier (heating unit + water chamber)	2230 XX
HA 20 water chamber	004861
Rear lid	003591
Filter (grey, washable)	003563 (5 pcs)
Filter (white, disposable)	003564 (5 pcs)
Low resistance bacteria filter (303 Respigard-II Filter)	004185
Power cord (Vivo)	003521 (EU: 003520)
External DC cable (EB 2)	003584
EB 2 external battery pack 24 V DC, including cable, charger and bag	004128



Accessory equipment connected to the analog and digital interfaces must be certified according to the respective IEC standards (e.g. IEC 60950 for data processing equipment and IEC 60601-1 for medical equipment). Furthermore all configurations shall comply with the valid version of the system standard IEC 60601-1-1. Everybody who connects additional equipment to the signal input part or signal output part configures a medical system, and is therefore responsible that the system complies with the requirements of the valid version of the system standard IEC 60601-1-1. If in doubt, consult the technical service department or your local representative.

12 Patient Settings

Patient Settings - Breas Vivo 30

Patient

Date

Clinic

Set by

<input type="checkbox"/>	<input type="checkbox"/>	<input type="checkbox"/>
PCV	PSV	CPAP

IPAP Max Inspiration Time

EPAP Min Inspiration Time

Breath Rate Inspiration Time

Rise Time Inspiration Trigger

CPAP Expiration Trigger

Ramp

Humidifier

Notes

.....

.....

.....

.....

.....

